

Thunderco, Inc.

Precision Control Valves and Systems for...

Liquid Pump Stations



Storage, Metering, and Pressure Reducing Sites

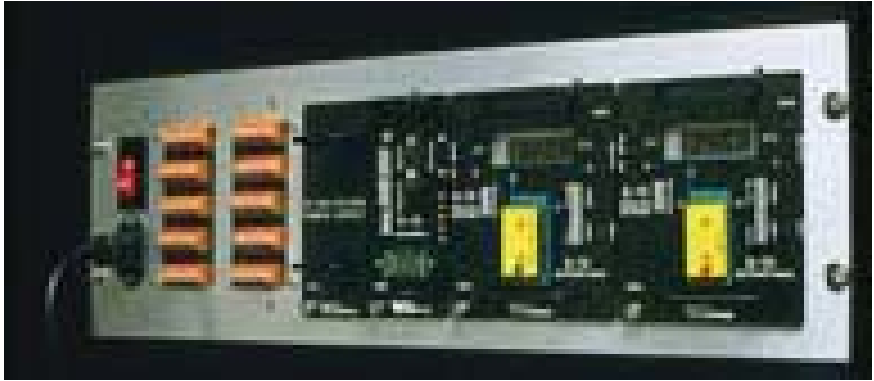


Power, Chemical, and Paper Plants



*Gas Wellheads and
Pipe Lines*

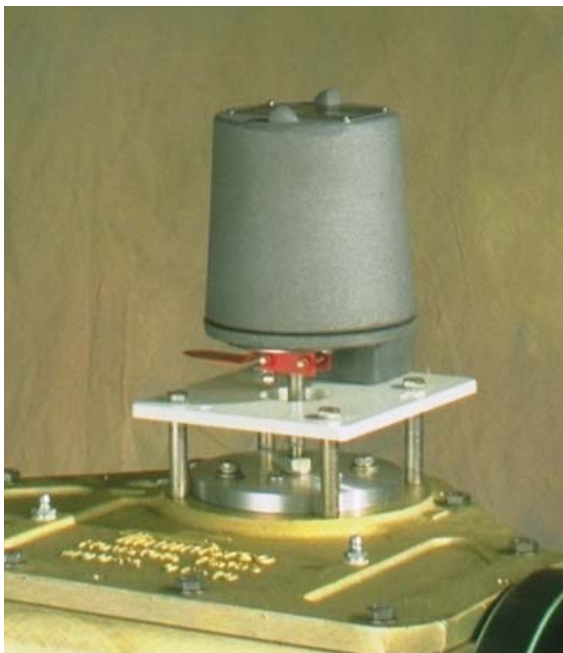
Modulating Control Valve Electronics



CSA-Series Process Controller



9000-Series Electro/Hydraulic Positioner Interface



PX-Series 4-20 mA Position Transmitter with integral limit switches for quarter-turn and rising-stem actuators (Potentiometer or Hall Effect units available)



Electro-Hydraulic Servo Based Control Valve Systems



*LA-1500 Self-Contained Linear
Electro/Hydraulic
Valve Actuator for rising stem control valves*



*QT-1500 Self-Contained Rotary Electro/
Hydraulic Valve Actuator for ball, butterfly and
plug valves*

Electro-Hydrostatic Control Valve Systems

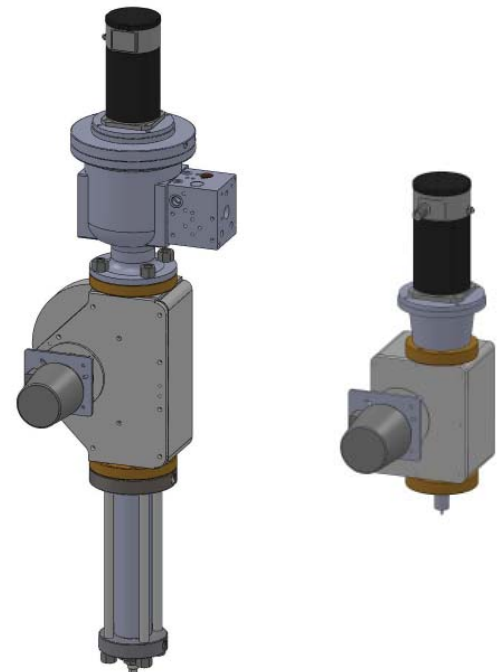


LA-HST-1500 Self Contained Linear Electro-Hydrostatic Valve Actuator shown here for Fisher 350 replacement on both V-ball and Globe Valves.

Motor controls shown below.



QT-HST/EST-1500 Self-Contained Rotary Electro-Hydrostatic Valve Actuator for ball, butterfly and plug valves



Skid Mounted Modulating Control Valve Systems



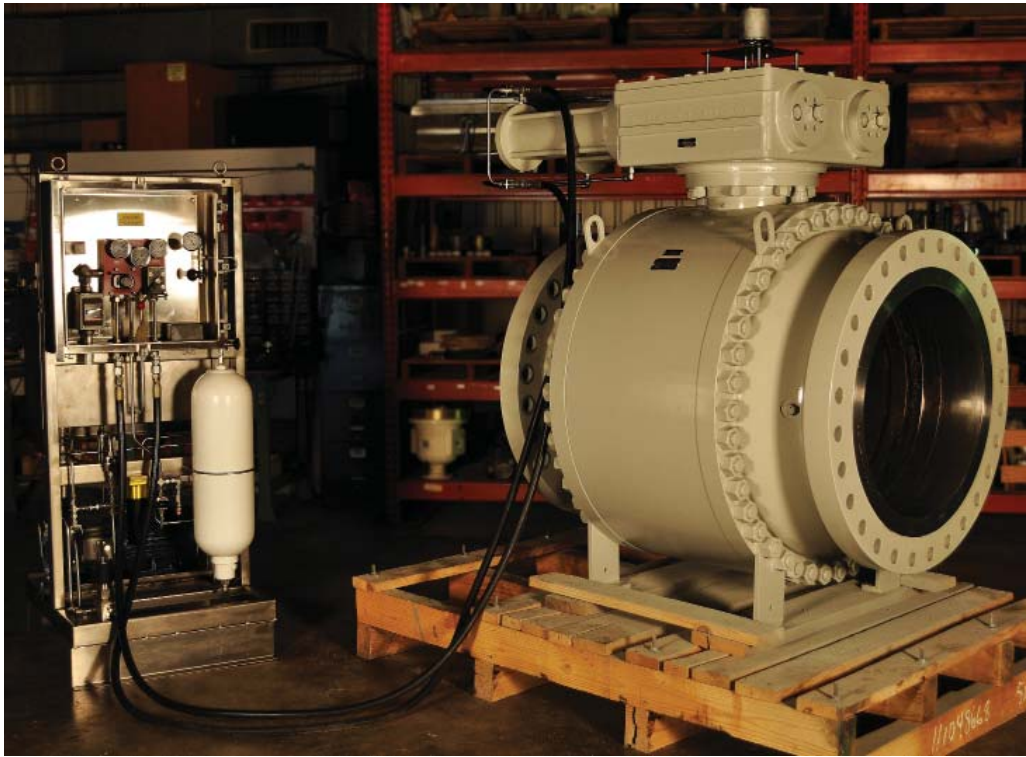
*HPA-3000 Skid Mounted
Electro-Hydraulic Power Unit
integrated with a choice of ...*

*LA-200 Linear
Hydraulic Valve Actuator
for rising stem control valves*

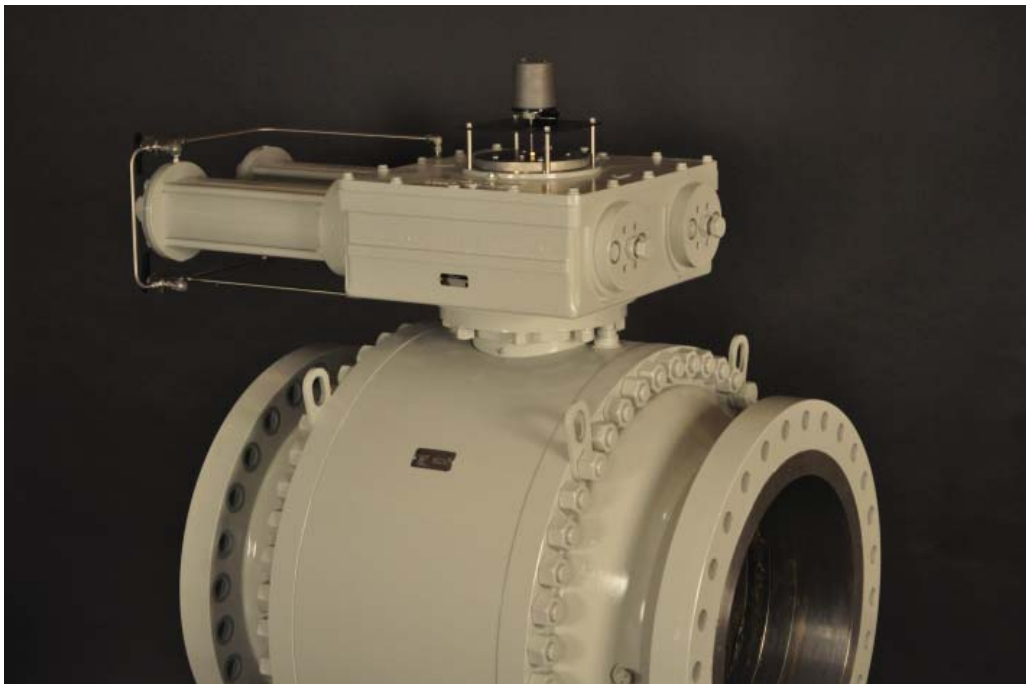


*QT Rotary Hydraulic
Valve Actuator
for ball, butterfly and plug valves*

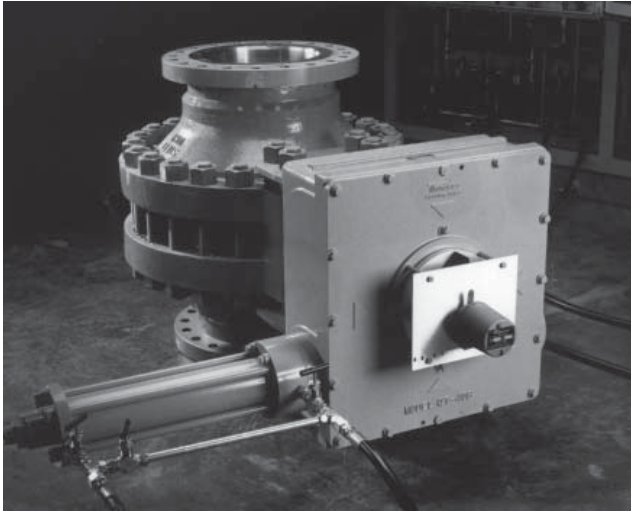




*HPA-3000 Skid Mounted
Electro-Hydraulic Power Unit with
QT-45.60 Actuator on 30 inch Control
Ball Valve*



Hydraulic and Gas Powered Actuators



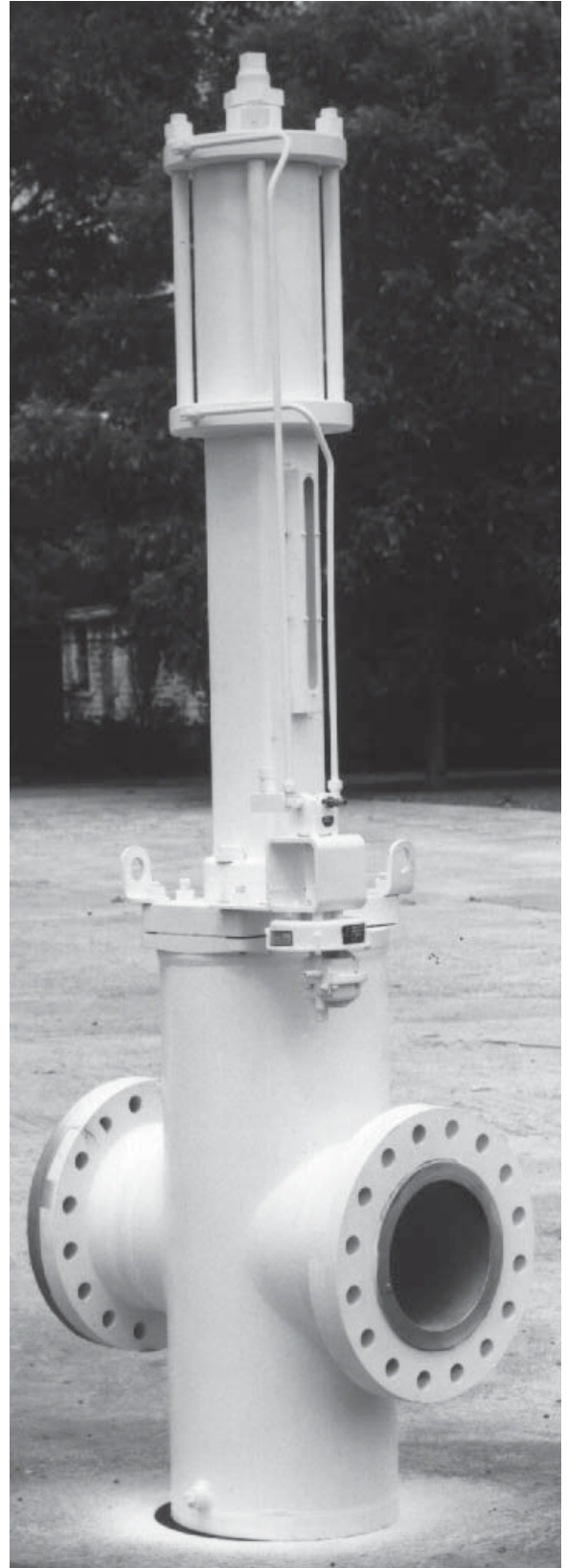
QT-40.140 High Pressure Hydraulic Actuator



QT-40.280 High Pressure Gas Actuator with GE-5000 electrically piloted controls and hydraulic manual override

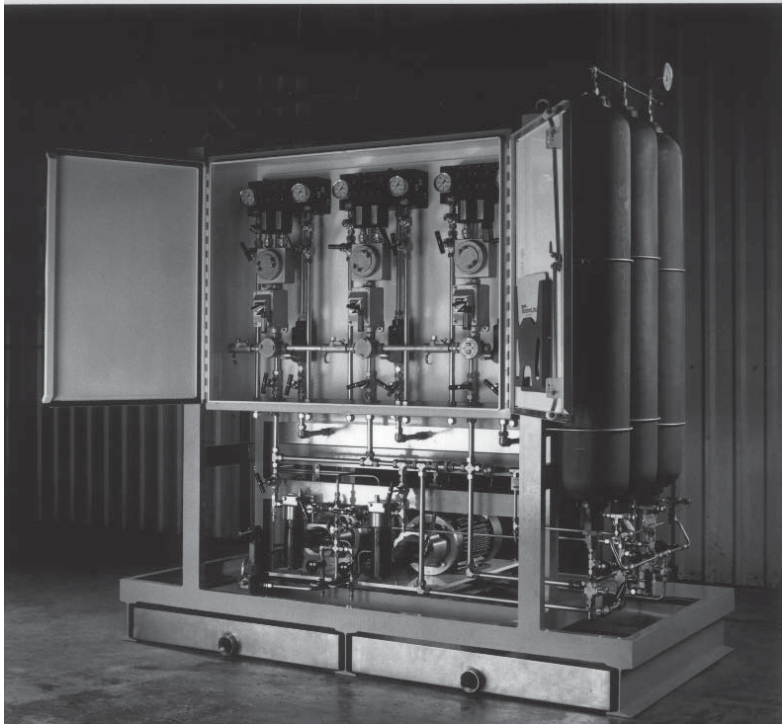


QT-10.125 gas powered actuator with GP-4000 pneumatically piloted ESD controls



LA-100 Gas or Hydraulic Gate Valve Actuator

Customized Hydraulic Power Units



HPA/HPU-3003 Central Hydraulic Power and Control Unit for multiple hydraulically actuated valves

HPU-3000 Emergency Shut Down Power Unit for Remote Gate/Ball Valve control (Low Power)





*HPU-2000 Emergency Shut Down
Power Unit for
Remote Gate Valve control
(Low Power with battery back-up)*

*HPU-2000 Emergency Shut Down
Power Unit for
Remote Ball Valve control
(Low Power with battery back-up)*





*HPA-3000.HV Blow Down
Service System for pre-
commissioning cleaning
of Heavy Duty Steam
Turbines
(2-3 second operation)*

*HPA-3002.HV
Lockhopper System for
Coal Gasification Gasifier
Vessel
(3-second operation)*



Thunderco, Inc.

909 Fisher Street
P.O. Box 920795
Houston, Texas 77292-0795

Phone: 713-681-4686/Fax: 713-681-4688
e-mail: support@thunderco.com
web page: <http://www.thunderco.com>